

---

---

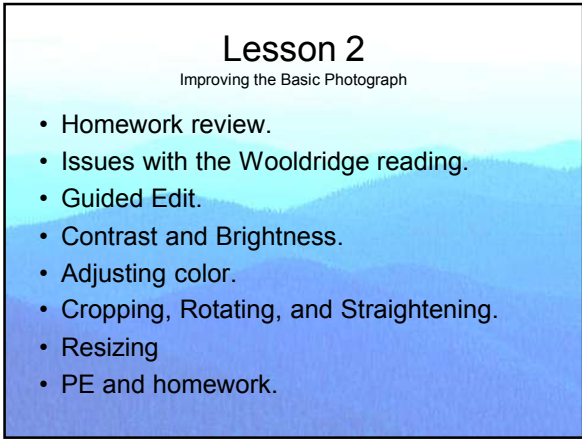
---

---

---

---

---



---

---

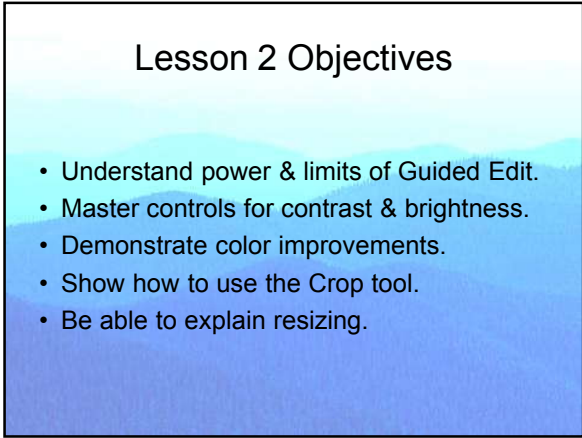
---

---

---

---

---



---

---

---

---

---

---

---

## Homework Review

- Issues with PSE printing at home.
- Look at prints that were both assigned and not assigned.
- Questions from the Wooldridge reading.



---

---

---

---

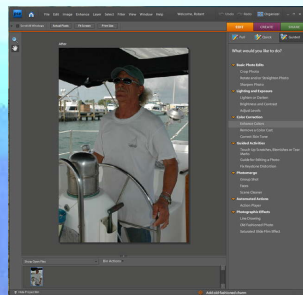
---

---

---

## Guided Edit Tab

- Recent feature.
- Useful adjustments.
- View: before & after.
- Smart Fix (Auto).
- Lighting & Color.
- Sharpen – not here.



---

---

---

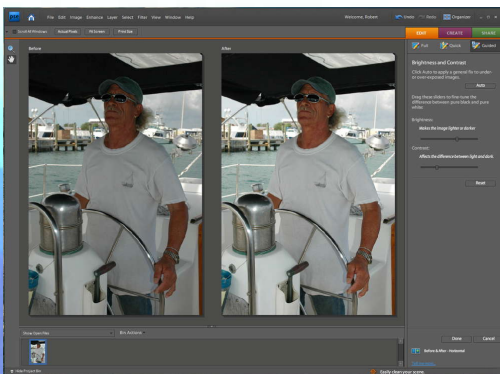
---

---

---

---

## Lighting



---

---

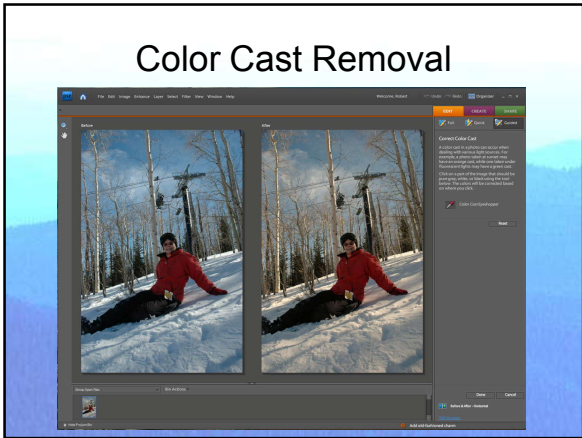
---

---

---

---

---



---

---

---

---

---

---

---

---

### Lighting Enhancements

- Guided Edit OK, but I use the drop down menu: Enhance | Adjust Lighting.
- Lighting is composed of:
  - Contrast.
  - Brightness.
- Understanding the histogram.
- Using the Levels tool

---

---

---

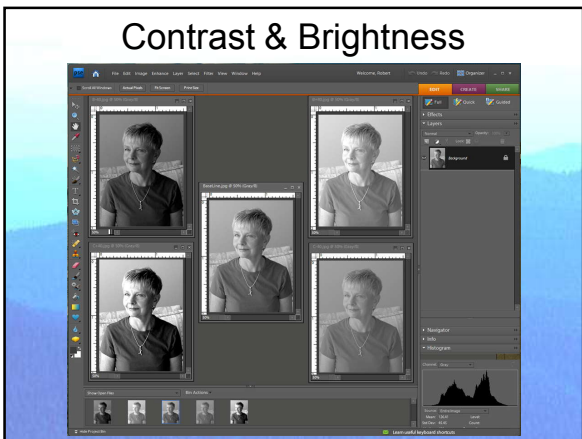
---

---

---

---

---



---

---

---

---

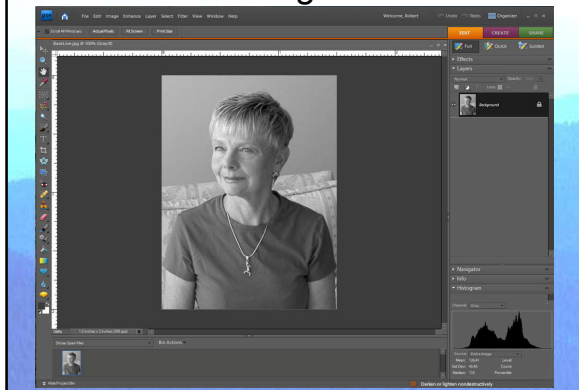
---

---

---

---

## Histogram



---

---

---

---

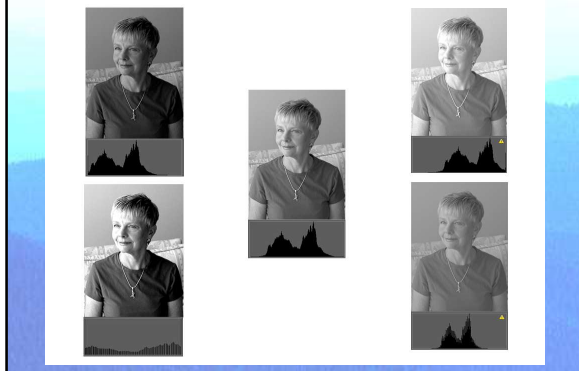
---

---

---

---

## Distribution Shapes



---

---

---

---

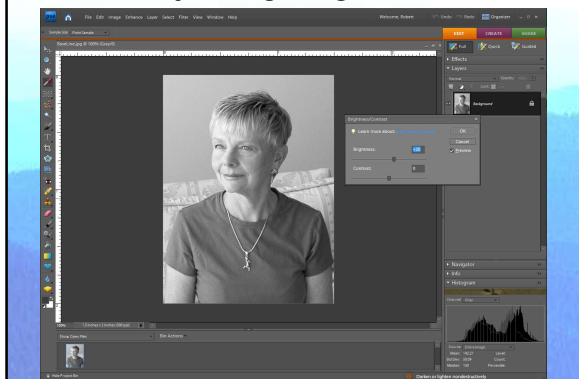
---

---

---

---

## Adjusting Brightness



---

---

---

---

---

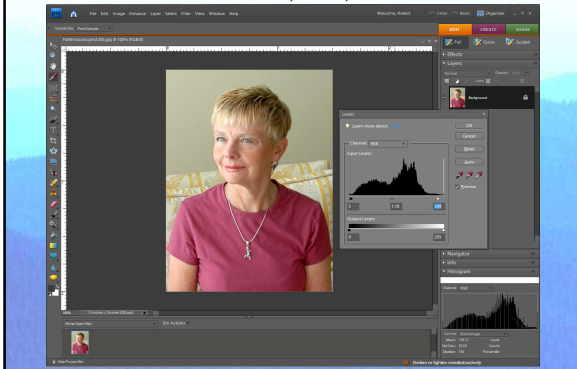
---

---

---

## Final Adjustments

Levels (in color)



---

---

---

---

---

---

---

---

## Introduction to Layers

- Before reading
- Before adjustment.
- Clear plastic sheets.
- More layers later.
- “Onion peeling.”
- Another way to work on an image part.
- Used often.



---

---

---

---

---

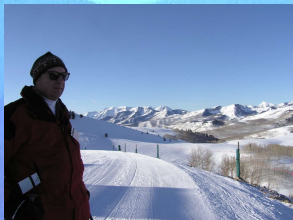
---

---

---

## Adjustment Layer

- Create an adjustment layer for Bob.
- Correct exposure with Levels midtones.
- Brush away unwanted area of layer.
- Return him to the image with Flatten.



---

---

---

---

---

---

---

---

## Select and Adjust

- Adjustment layer.
- Levels.
- Name Bob.
- Midtones slider.
- Brush background.
- Sizes 15, 100, & 500.
- Flatten.
- Perform demo.



---

---

---

---

---

---

---

---

## Improving Color

- Once again we are ahead of Wooldridge.
- Earlier we have dealt with color casts.
- Hue & Saturation.
- Why color change happens.



---

---

---

---

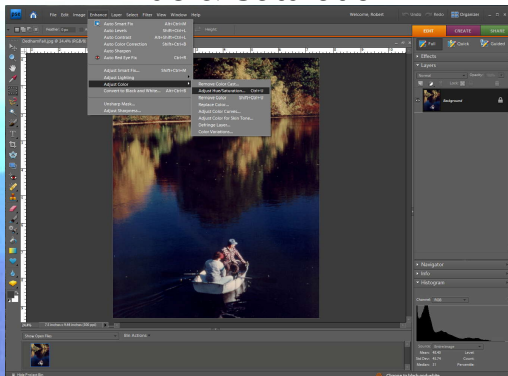
---

---

---

---

## Hue & Saturation



---

---

---

---

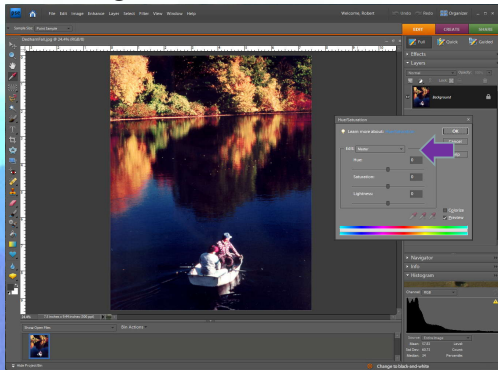
---

---

---

---

## Changes to Hue & Saturation



---

---

---

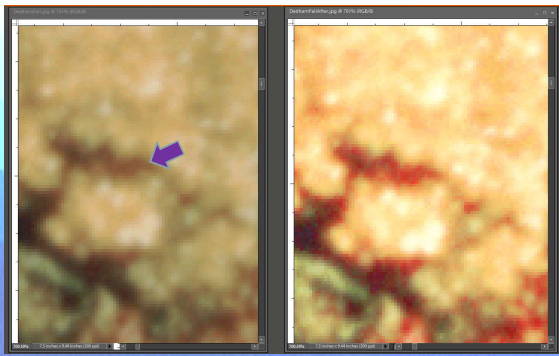
---

---

---

---

## Why Color Change Happens



---

---

---

---

---

---

---

## Practical Exercise

- Use Guided Edit on PatVienna.jpg.
- Duplicate the lesson example DedhamFalls.jpg.
  - Levels adjustment
  - Hue & Saturation in color channels
- If time permits, work on other images.

---

---

---

---

---

---

---



## Homework

- Read Wooldridge pages 96 – 145.
- See what you can do to the poor picture Overexp.jpg. Try Quick Fix and crop off the really bad part.
- Use the same technique to improve PatShadow.jpg.
- Work on your own prints.

---

---

---

---

---

---

---

## Lesson 2 Objectives

- Understand power & limits of Guided Edit.
- Master controls for contrast & brightness.
- Demonstrate color improvements.
- Show how to use the Crop tool.
- Be able to explain resizing.

---

---

---

---

---

---

---